



Maadi Gate
Business Plaza

SUCCESS AND BEYOND

DEVELOPED BY
MIRAD
DEVELOPMENTS



- الموقع العام للمشروع علي تقاطع طريق الأوتوستراد مباشرة مع طريق زهراء المعادي و قرب الموقع من القاهرة الجديدة و الدائري و المعادي.
- يحاط المشروع بعدد من المناطق السكنية ذات الكثافات المرتفعة.
- قرب المشروع من المواصلات العامة مما يساعد على سهولة الوصول للمشروع بالنسبة للموظفين بالشركات الكائنة بالمشروع.
- يتميز المبني برؤية واضحة من علي الأوتستراد.
- المشروع قائم بالفعل ويمكن تسليم الوحدات فوري.





 **Maadi Gate**
Business Plaza

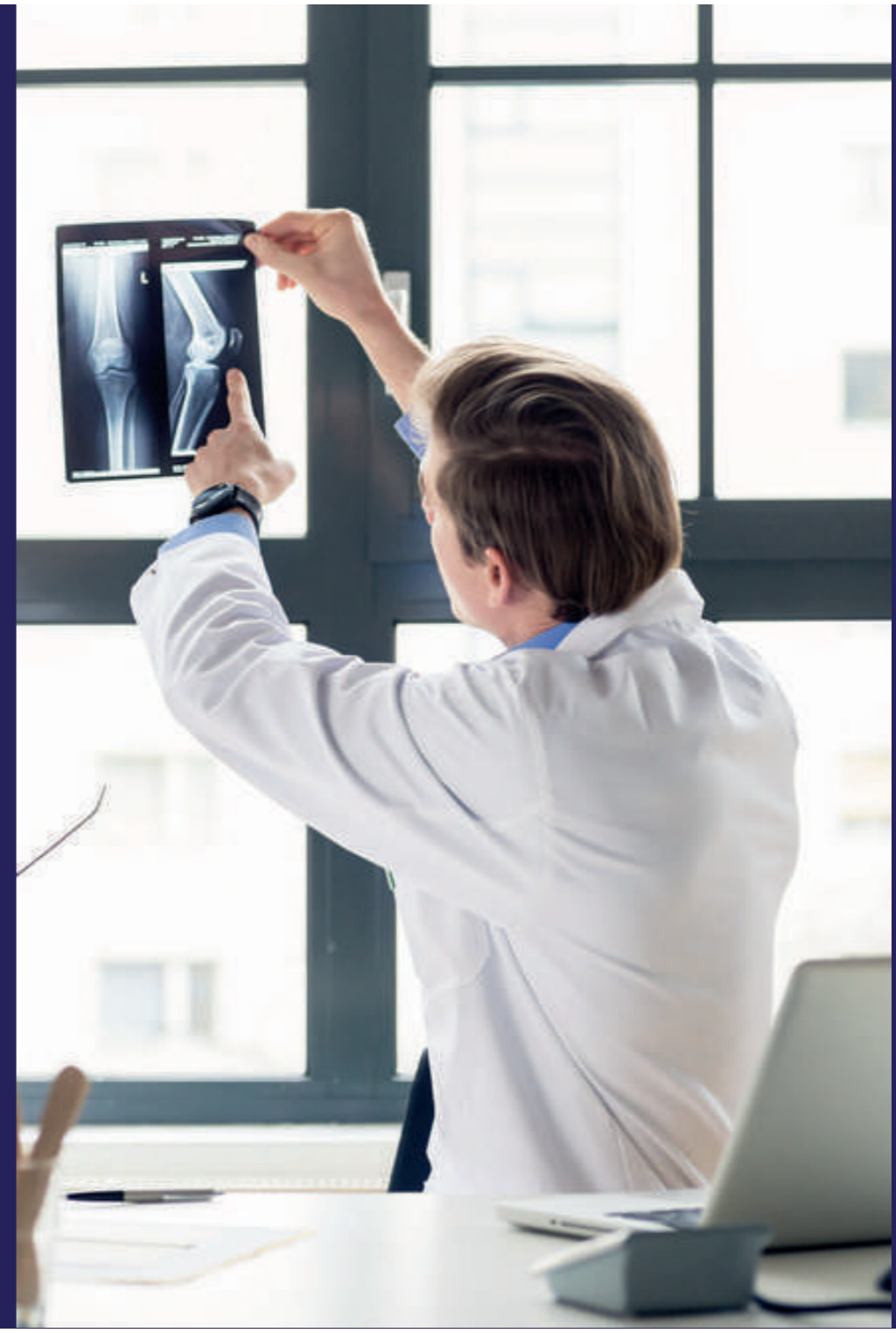
- الدور الارضي و الاول ميزه للنشاط الادارى.
- واجهات المشروع من الرخام.
- تتميز معظم وحدات المشروع برؤية مميزة وفيو مفتوح.
- أماكن انتظار تحت المبنى و أماكن انتظار خارجية.
- يقع المشروع بالقرب من القرية التكنولوجية بالمعادي.



CLINICS



LABS



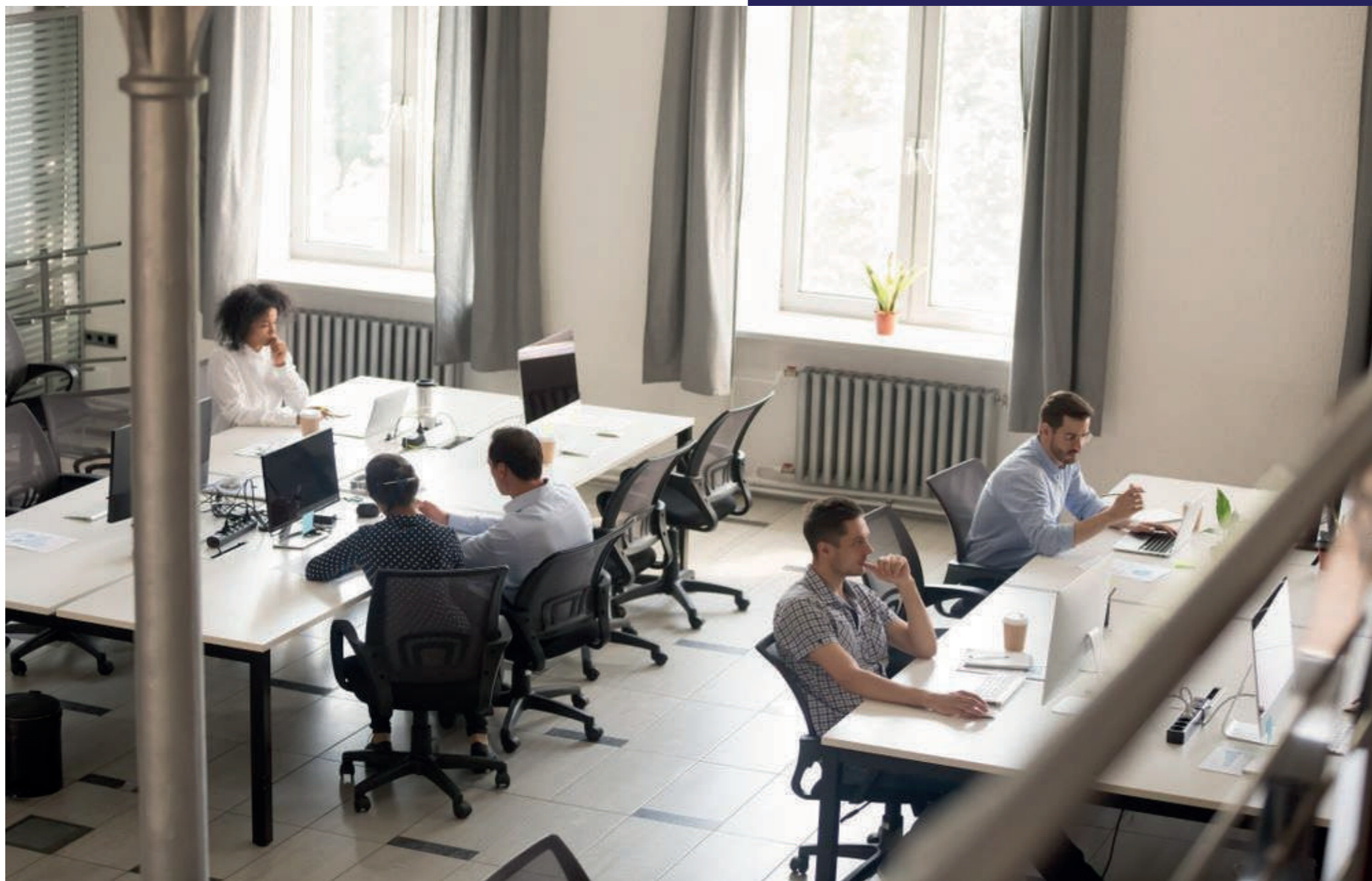
X-RAY CENTERS

OFFICES





GYM



WORKSPACE



KIDS AREA



BANK



Maadi Gate
Business Plaza

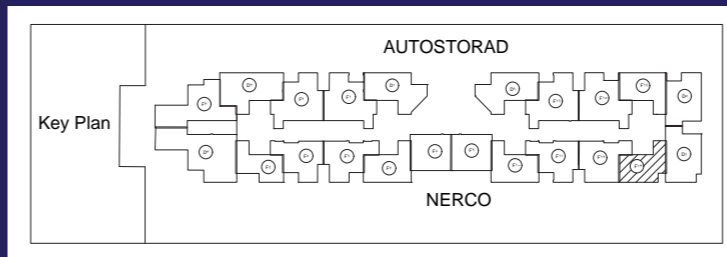
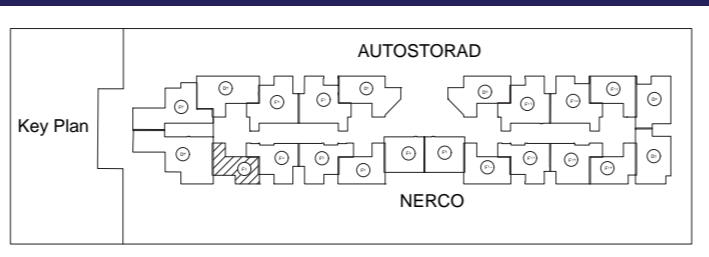
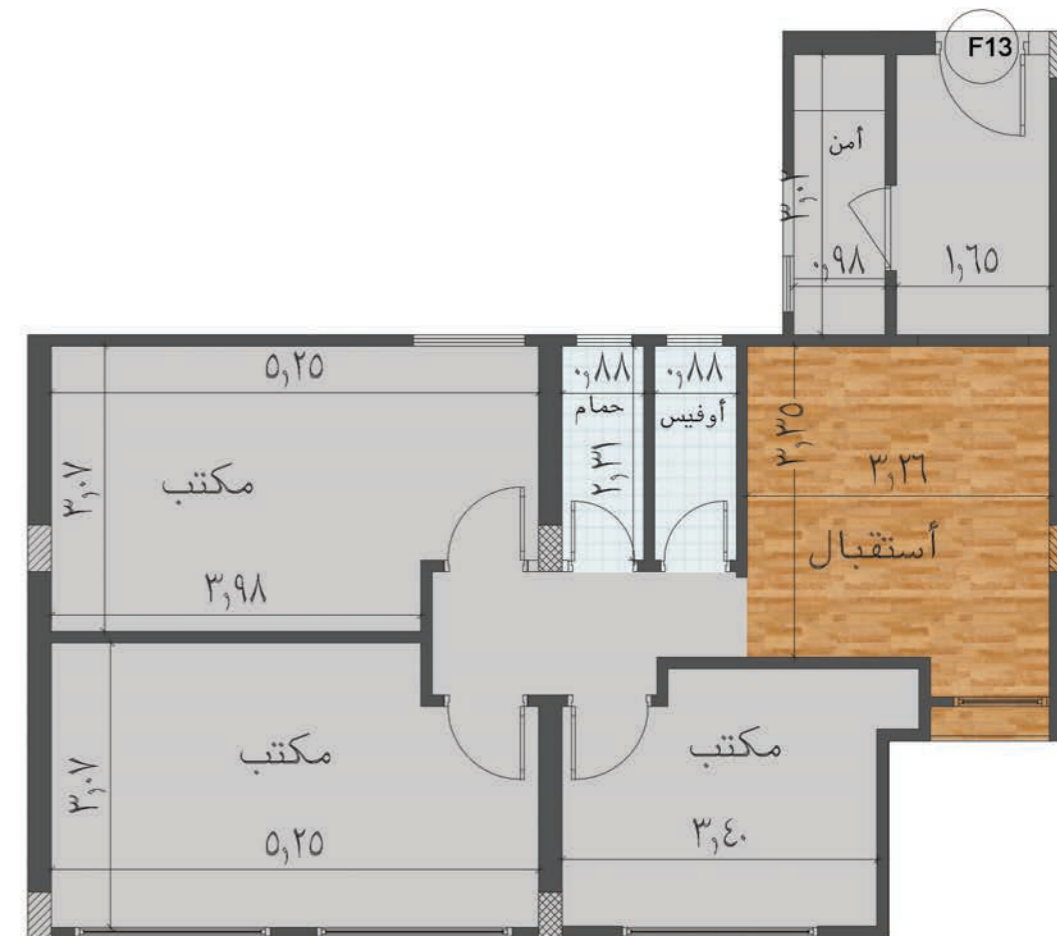


Maadi Gate
Business Plaza



Total Gross area
93 M²

Total Gross area
102 M²



Disclaimer
The Information contained in this promotional material is for clarification purpose only and may be changed. Statement, figures, calculations, plans and images are indicative only and changes may be made to them during the planning or development stages. Adding or developing any dimensions in installation or finishing are variable costs and are subject to change without notice.

Disclaimer
The Information contained in this promotional material is for clarification purpose only and may be changed. Statement, figures, calculations, plans and images are indicative only and changes may be made to them during the planning or development stages. Adding or developing any dimensions in installation or finishing are variable costs and are subject to change without notice.



Maadi Gate
Business Plaza

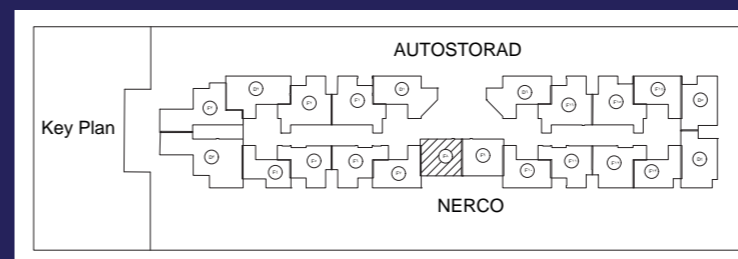
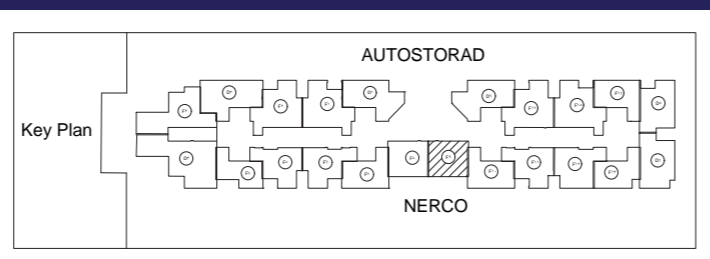


Maadi Gate
Business Plaza



Total Gross area
107 M²

Total Gross area
107 M²



Disclaimer

The Information contained in this promotional material is for clarification purpose only and may be changed. Statement, figures, calculations, plans and images are indicative only and changes may be made to them during the planning or development stages. Adding or developing any dimensions in installation or finishing are variable costs and are subject to change without notice.

Disclaimer

The Information contained in this promotional material is for clarification purpose only and may be changed. Statement, figures, calculations, plans and images are indicative only and changes may be made to them during the planning or development stages. Adding or developing any dimensions in installation or finishing are variable costs and are subject to change without notice.



Maadi Gate Business Plaza



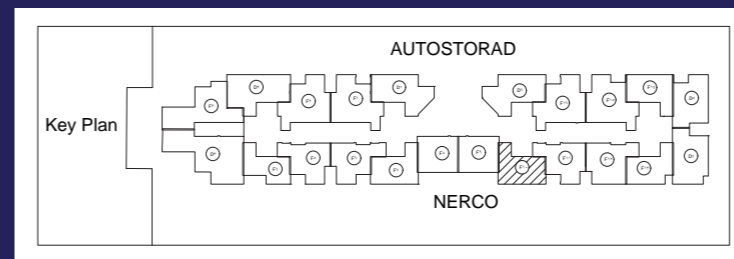
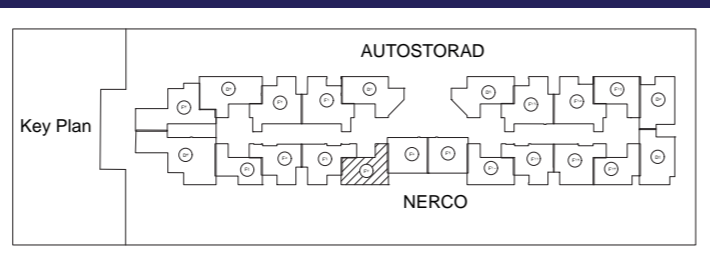
Total Gross area
107 M²



Maadi Gate Business Plaza



Total Gross area
108 M²



Disclaimer
The Information contained in this promotional material is for clarification purpose only and may be changed. Statement, figures, calculations, plans and images are indicative only and changes may be made to them during the planning or development stages. Adding or developing any dimensions in installation or finishing are variable costs and are subject to change without notice.

Disclaimer
The Information contained in this promotional material is for clarification purpose only and may be changed. Statement, figures, calculations, plans and images are indicative only and changes may be made to them during the planning or development stages. Adding or developing any dimensions in installation or finishing are variable costs and are subject to change without notice.



Maadi Gate
Business Plaza

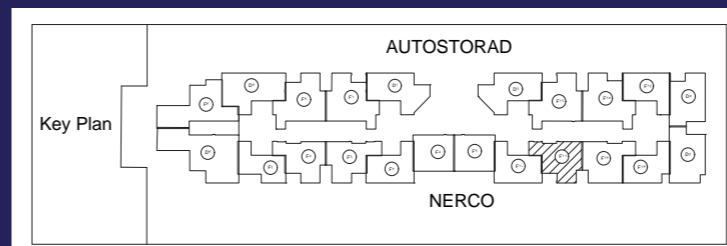
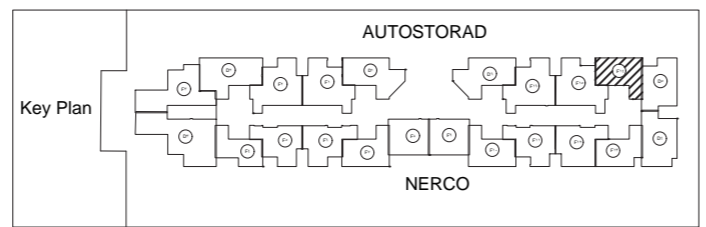


Maadi Gate
Business Plaza



Total Gross area
108 M²

Total Gross area
110 M²



Disclaimer
The Information contained in this promotional material is for clarification purpose only and may be changed. Statement, figures, calculations, plans and images are indicative only and changes may be made to them during the planning or development stages. Adding or developing any dimensions in installation or finishing are variable costs and are subject to change without notice.

Disclaimer
The Information contained in this promotional material is for clarification purpose only and may be changed. Statement, figures, calculations, plans and images are indicative only and changes may be made to them during the planning or development stages. Adding or developing any dimensions in installation or finishing are variable costs and are subject to change without notice.



Maadi Gate
Business Plaza

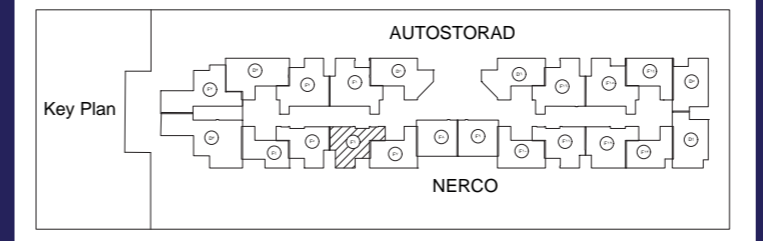
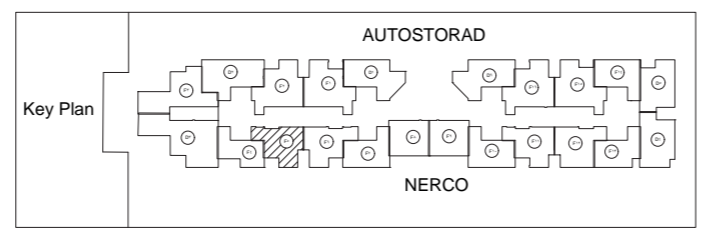


Maadi Gate
Business Plaza



Total Gross area
113 M²

Total Gross area
116 M²



Disclaimer
The Information contained in this promotional material is for clarification purpose only and may be changed. Statement, figures, calculations, plans and images are indicative only and changes may be made to them during the planning or development stages. Adding or developing any dimensions in installation or finishing are variable costs and are subject to change without notice.

Disclaimer
The Information contained in this promotional material is for clarification purpose only and may be changed. Statement, figures, calculations, plans and images are indicative only and changes may be made to them during the planning or development stages. Adding or developing any dimensions in installation or finishing are variable costs and are subject to change without notice.



Maadi Gate
Business Plaza

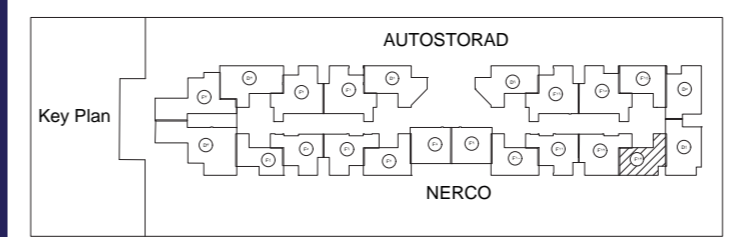
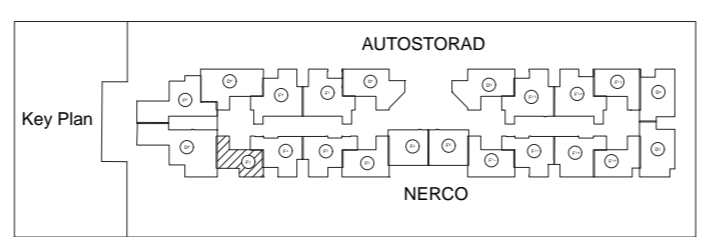


Maadi Gate
Business Plaza



Total Gross area
127 M²

Total Gross area
144 M²



Disclaimer
The information contained in this promotional material is for clarification purpose only and may be changed. Statement, figures, calculations, plans and images are indicative only and changes may be made to them during the planning or development stages. Adding or developing any dimensions in installation or finishing are variable costs and are subject to change without notice.

Disclaimer
The information contained in this promotional material is for clarification purpose only and may be changed. Statement, figures, calculations, plans and images are indicative only and changes may be made to them during the planning or development stages. Adding or developing any dimensions in installation or finishing are variable costs and are subject to change without notice.



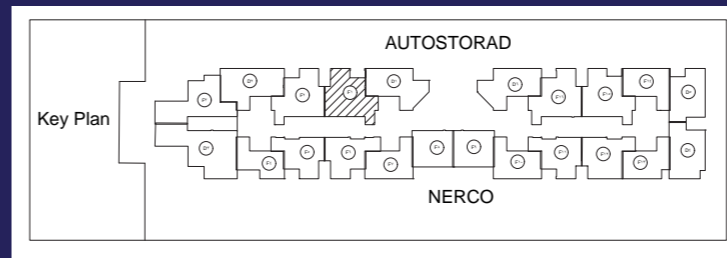
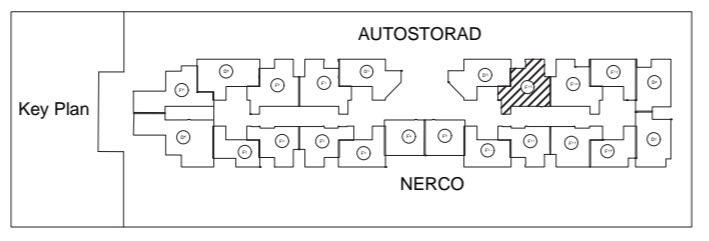
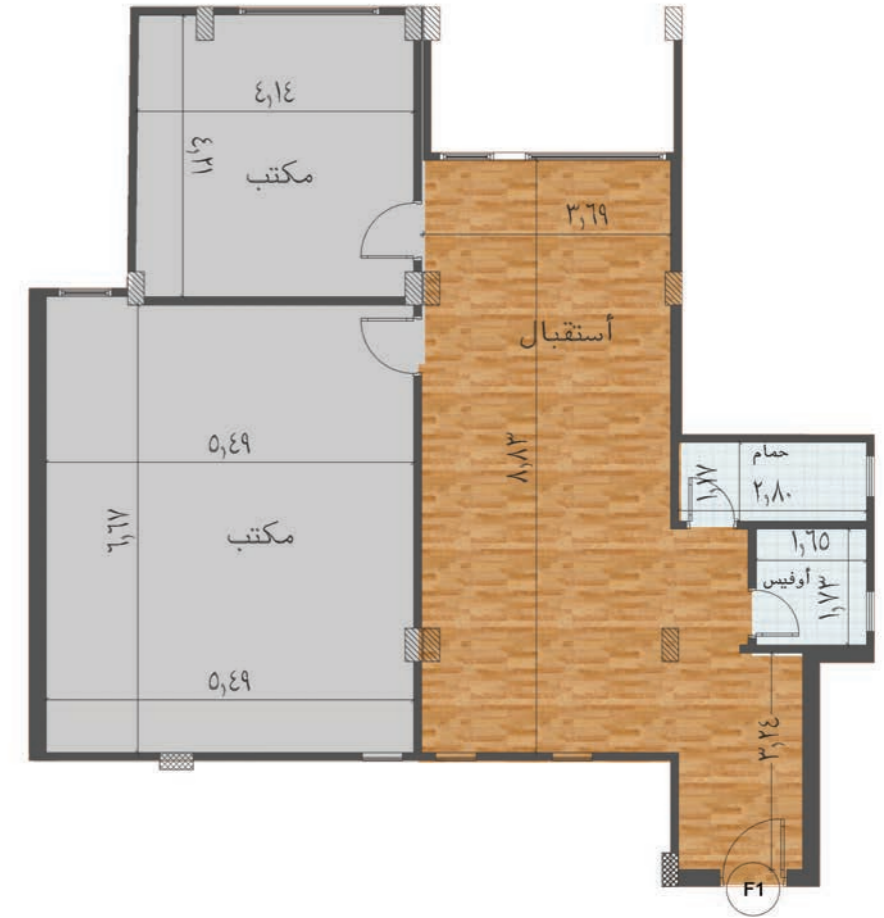
Maadi Gate
Business Plaza



Maadi Gate
Business Plaza

Total Gross area
145 M²

Total Gross area
145 M²



Disclaimer
The information contained in this promotional material is for clarification purpose only and may be changed. Statement, figures, calculations, plans and images are indicative only and changes may be made to them during the planning or development stages. Adding or developing any dimensions in installation or finishing are variable costs and are subject to change without notice.

Disclaimer
The information contained in this promotional material is for clarification purpose only and may be changed. Statement, figures, calculations, plans and images are indicative only and changes may be made to them during the planning or development stages. Adding or developing any dimensions in installation or finishing are variable costs and are subject to change without notice.



Maadi Gate
Business Plaza

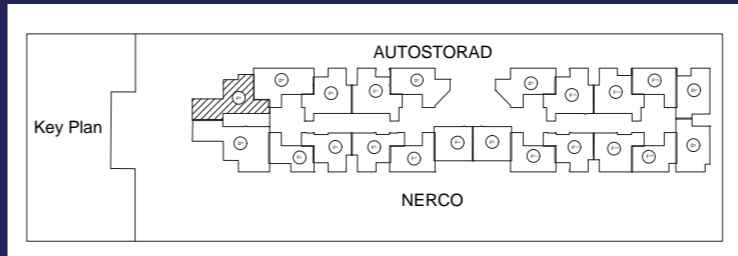
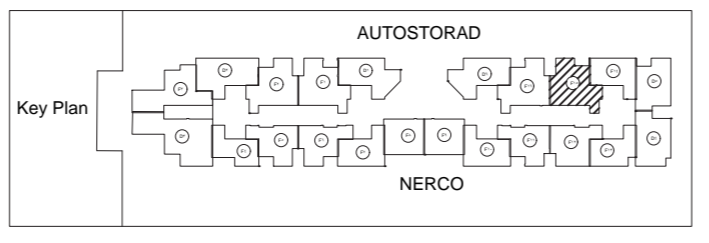


Maadi Gate
Business Plaza



Total Gross area
147 M²

Total Gross area
160 M²



Disclaimer

The Information contained in this promotional material is for clarification purpose only and may be changed. Statement, figures, calculations, plans and images are indicative only and changes may be made to them during the planning or development stages. Adding or developing any dimensions in installation or finishing are variable costs and are subject to change without notice.

Disclaimer

The Information contained in this promotional material is for clarification purpose only and may be changed. Statement, figures, calculations, plans and images are indicative only and changes may be made to them during the planning or development stages. Adding or developing any dimensions in installation or finishing are variable costs and are subject to change without notice.